

# SHEARMAX™ INSTALLATION

04-12-2011

ICC-ES ESR-1727



Shear Transfer Systems, Inc.

9845 Santa Fe Avenue East

P.O. Box 402563

Hesperia, CA 92340-2563

ph | 760 . 949 . 4191

fax | 760 . 948 . 5330

## TABLE OF CONTENTS

### FRONT COVER - NOTES

- 1) SHEARMAX PARTS
- 2) SHEARMAX PARTS
- 3) HOLD DOWN ANCHOR BOLT
- 4) ANCHOR BOLT CHARTS
- 5) TEMPLATE ASSEMBLY
- 6) TEMPLATE INSTALLATION
- 7) FOUNDATION FOR ESR-1727
- 8) FOUNDATION FOR ESR-1727
- 9) PANEL DESCRIPTION
- 10) ALLOWABLE PANEL HOLES
- 11) PANEL BOTTOM INSTALLATION
- 12) PANEL BOTTOM ADJUSTMENTS
- 13) PANEL TOP INSTALLATION
- 14) PANEL TOP ADJUSTMENTS
- 15) POST ENHANCEMENTS – FACTORY
- 16) POST ENHANCEMENTS – FIELD
- 17) TRIM FIT PANEL
- 18) JAMB CLIP

### BACK COVER - NOTES

## GENERAL NOTES & INSTRUCTIONS

This booklet is only a guide for the SHEARMAX panel installation. For required installation and details, the approved plan must be consulted and/or accompanied with the Shear Transfer Systems, Inc. (STS) ICC-ES report, ESR 1727. All engineer, architect, and governing departments' specifications and requirements must be followed. If plan lacks necessary or contains conflicting information to complete installation, the engineer of record must be contacted for clarification. All specified fasteners must be installed according to proper instructions. Always use proper safety equipment. This guide may or may not be comprehensive.

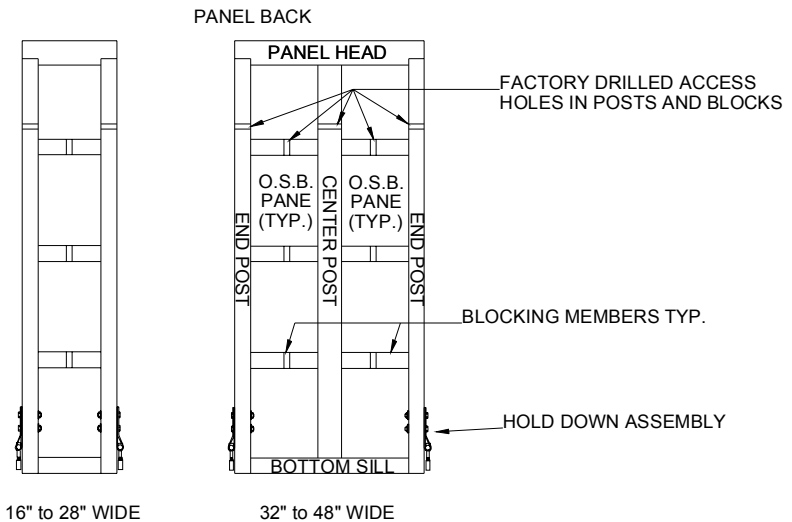
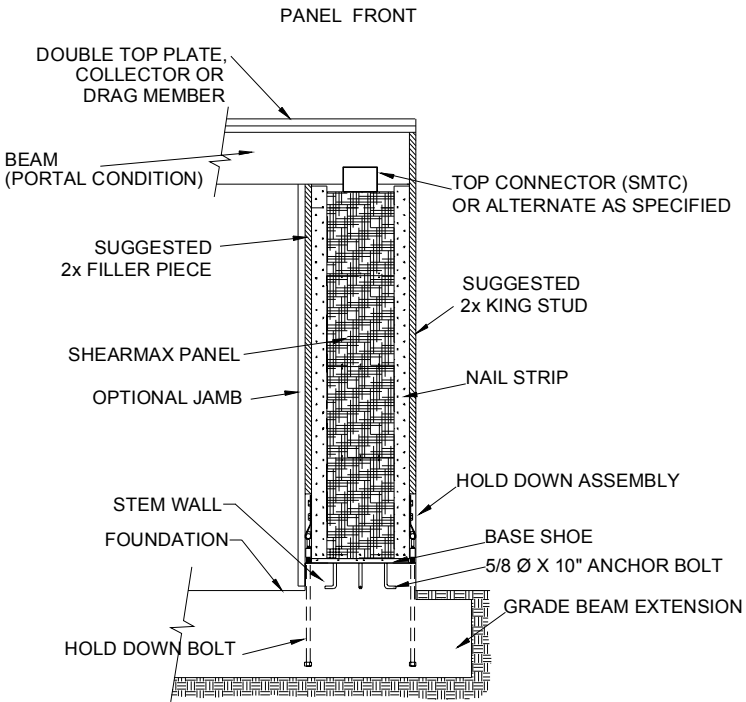
**NEED HELP?**

**FREE JOB-SITE FIELD & TECH SUPPORT**

CALL toll 877-SHEARMAX free 877-743-2762

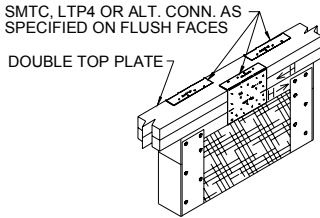
# SHEARMAX PARTS

## PANEL – FRONT & BACK

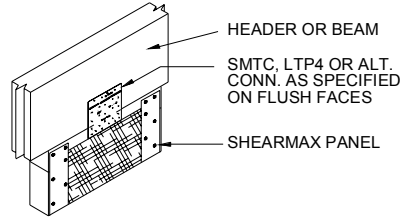


# SHEARMAX PARTS

## TOP OF PANEL

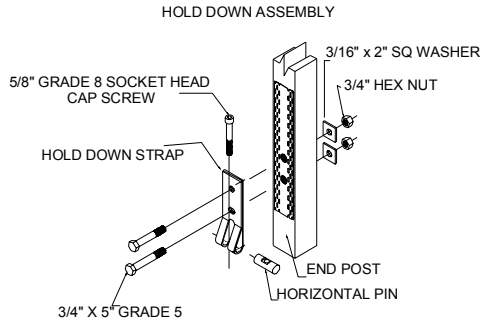
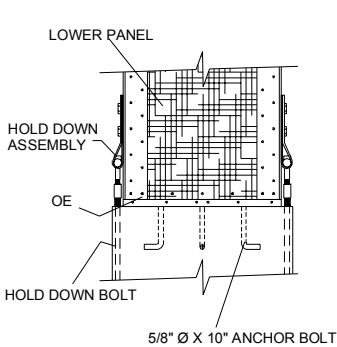


**TOP OF PANEL  
PANEL CONNECTED TO  
DOUBLE 2x4 TOP PLATES**

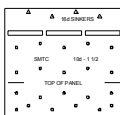


**TOP OF PANEL  
PANEL CONNECTED TO BEAM  
(PORTAL CONDITION)**

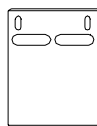
## BOTTOM OF PANEL



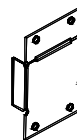
## UNATTACHED PANEL HARDWARE (NOT TO SCALE)



**SMTC  
(TOP CONNECTOR)  
(SEE PAGE 12)**



**SHIM  
(SEE PAGE 11)**



**JAMB CLIP  
(SEE PAGE 18)**

# CAST-IN-PLACE CONCRETE

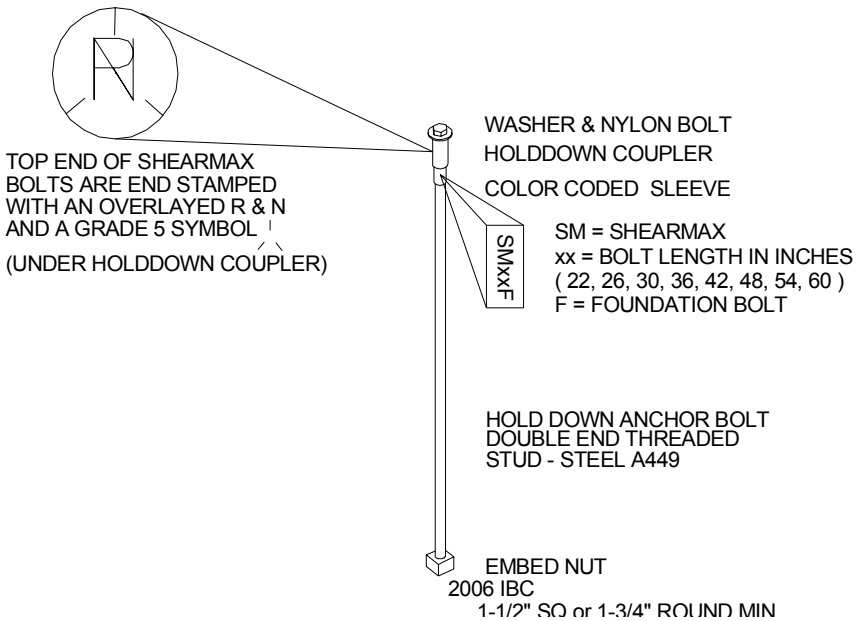
## FOUNDATION PARTS

### HOLD DOWN ANCHOR BOLT

NOT TO SCALE

SHEARMAX PROTECTIVE CAPS ARE COLOR CODED AND MARKED BY LENGTH

RED	22"
WHITE	26"
BLUE	30"
GREEN	36"
ORANGE	42"
GREY	48"
YELLOW	54"
PURPLE	60"
BLACK	CUSTOM



# CAST-IN-PLACE CONCRETE

ANCHOR EMBEDMENT LENGTH MAY BE FOUND BY USING THE CHART BELOW. THIS CHART ASSUMES THAT PROPER CONCRETE COVERAGE FOR THE TOP OF SHEAR CONE. SHEAR CONE STARTS AT THE BOTTOM OF FORM BOARD.

SHEARMAX CIP HOLD-DOWN ANCHOR BOLT  
3/4" DIA. ASTM A449, STUD TYPE BOLT (TYP.)

STOCK BOLT LENGTHS - CUSTOM LENGTHS ARE AVAILABLE					SHEAR CONE EMBEDMENT DEPTH DETERMINES ANCHOR BOLT LENGTH - NOT PANEL SIZE (WIDTH OR HEIGHT)
MAXIMUM 2nd POUR THICKNESS	MAXIMUM SIZE OF FORM BOARD(S)	TOTAL BOLT EMBEDMENT	TOTAL BOLT LENGTH	BOLT CODE	
4	2x UP TO 6	20	22	SM22F	
8	2x UP TO 10	24	26	SM26F	
12	2x UP TO 14	28	30	SM30F	
18	2x UP TO 20	34	36	SM36F	
24	2x UP TO 26	40	42	SM42F	
30	2x UP TO 32	46	48	SM48F	
36	2x UP TO 38	52	54	SM54F	
42	2x UP TO 44	58	60	SM60F	

SHEARMAX ANCHOR NUT DETAIL	
----------------------------	--

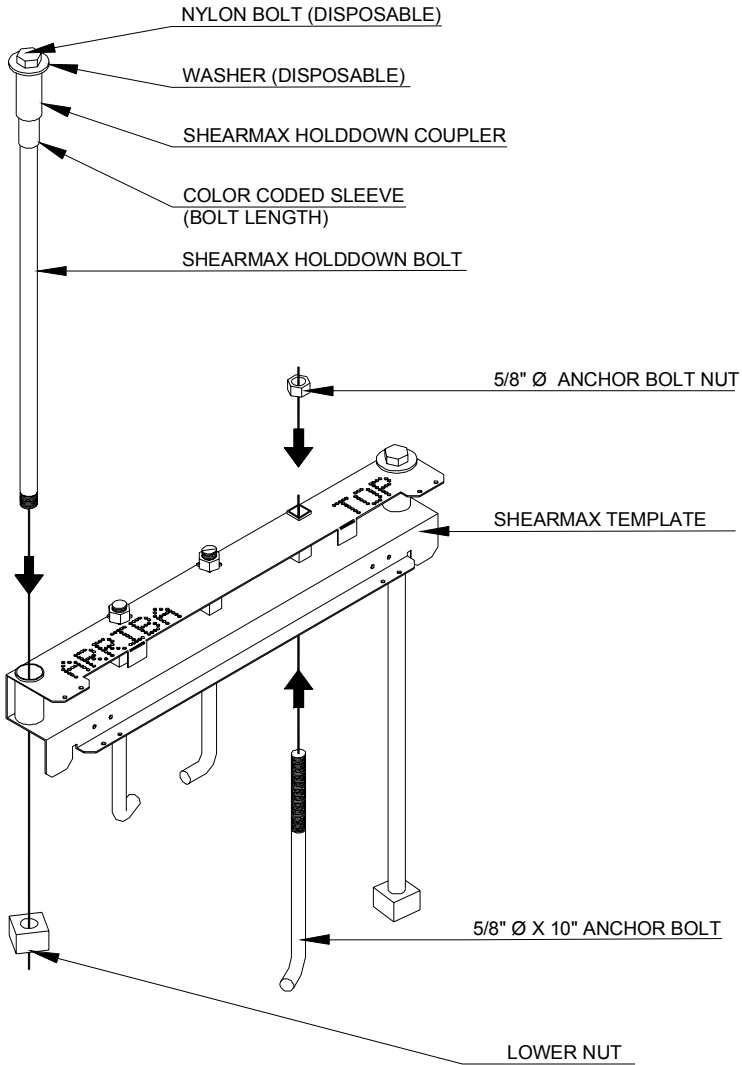
## BOLTS REQUIRED PER PANEL

NOTE: 5/8" ANCHOR BOLTS NOT SUPPLIED

SHEARMAX PANEL MODEL #	5/8" Ø SHEAR BOLTS REQUIRED	HOLDDOWN ANCHORS REQUIRED
SM16	2	2
SM18	2	2
SM21	3	2
SM24	3	2
SM28	4	2
SM32	4	2
SM36	6	2
SM42	6	2
SM48	6	2

# CAST-IN-PLACE CONCRETE

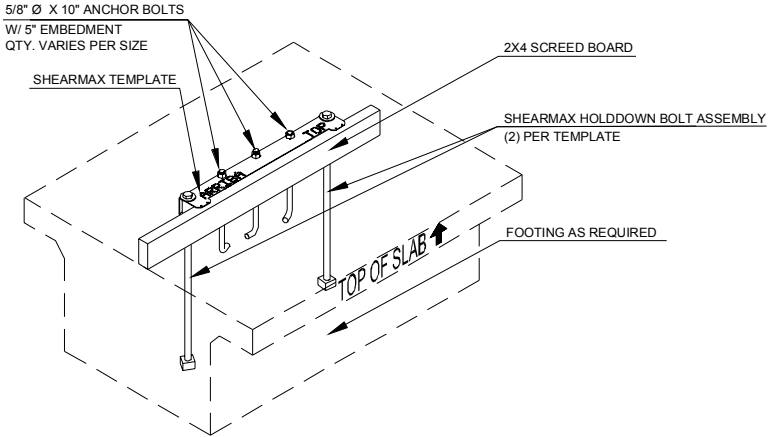
## TEMPLATE INSTALLATION



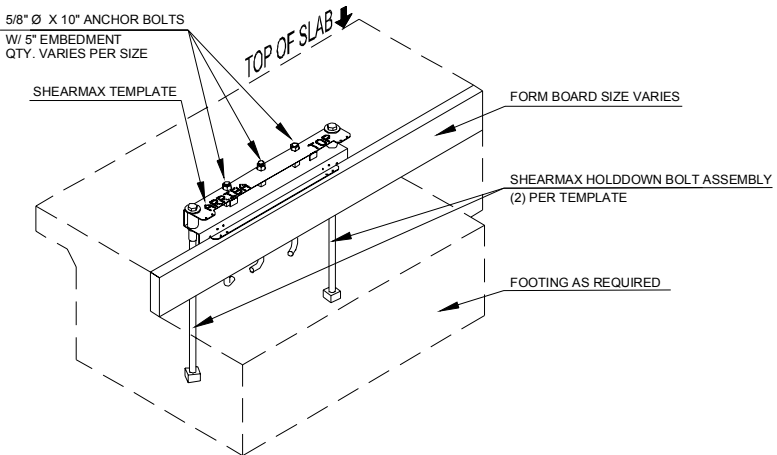
## TEMPLATE/ BOLT ASSEMBLY

# CAST-IN-PLACE CONCRETE

## TEMPLATE INSTALLATION



### TEMPLATE INSTALLATION @ INTERIOR FOOTING



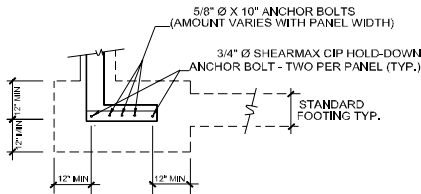
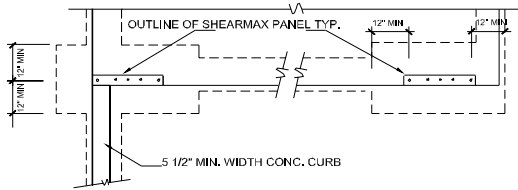
### TEMPLATE INSTALLATION @ EXTERIOR FOOTING

# CAST-IN-PLACE CONCRETE

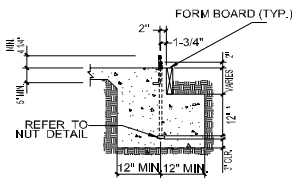
## FOUNDATION – ESR-1727

**NOTE: THE INSTRUCTIONS & DETAILS FOUND IN THE APPROVED PLANS MUST ALWAYS BE FOLLOWED—SEE GENERAL NOTE ON FRONT COVER.**

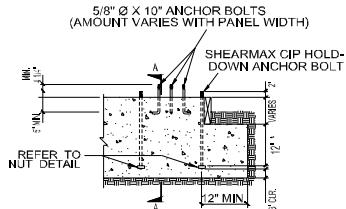
SHEARMAX HOLDDOWN ANCHORS ARE TO BE CAST-IN-PLACE WITH SPECIAL NUT AT THE EMBEDDED END IN ACCORDANCE WITH MINIMUM DIMENSIONS SET FORTH IN THE DETAILS SHOWN BELOW. CONCRETE SHALL HAVE A MINIMUM 28 DAY COMPRESSIVE STRENGTH OF 2500 PSI. ALTERNATE DETAILS ARE ACCEPTABLE IF DESIGNED IN ACCORDANCE WITH THE GOVERNING CODE AND APPROVED BY THE BUILDING OFFICIAL. DETAILS SHOWN MAY NOT BE INCLUSIVE. FOUNDATION AND STEM WALL DESIGN (e.g. OVERTURNING AND REINFORCEMENT) BY OTHERS



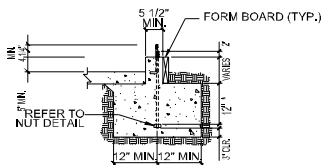
PLAN VIEW - OPTIONS FOR REQUIRED CONCRETE END DISTANCE @ CIP HOLD-DOWN ANCHOR



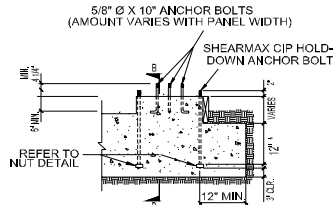
SECTION A-A @ SLAB



ELEVATION @ SLAB



SECTION B-B @ CURB / STEM WALL



ELEVATION @ CURB / STEM WALL

- NOTES: 1. FOUNDATION AND STEM WALL DESIGN (i.e. REINFORCEMENT) BY OTHERS
- 2. ALTERNATE ANCHORAGE CONFIGURATIONS MAY BE DESIGNED BY OTHERS

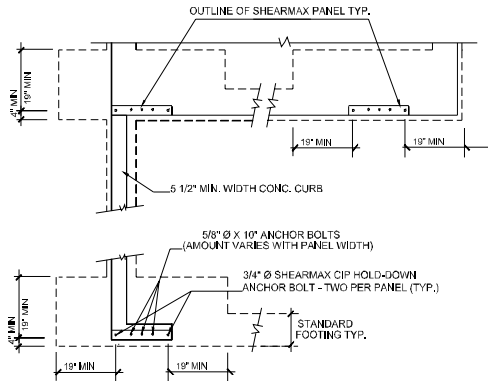
\* 8" MIN. EMBEDMENT

# CAST-IN-PLACE CONCRETE

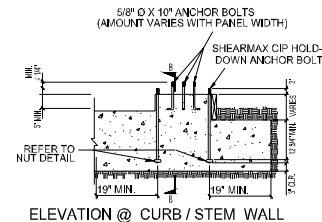
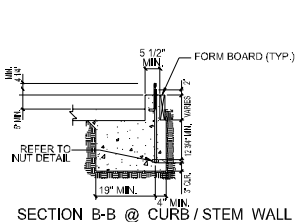
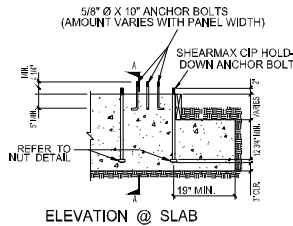
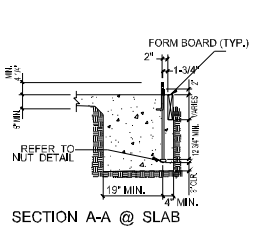
## FOUNDATION – ESR-1727

**NOTE: THE INSTRUCTIONS & DETAILS FOUND IN THE APPROVED PLANS MUST ALWAYS BE FOLLOWED—SEE GENERAL NOTE ON FRONT COVER.**

SHEARMAX HOLDDOWN ANCHORS ARE TO BE CAST-IN-PLACE WITH SPECIAL NUT AT THE EMBEDDED END IN ACCORDANCE WITH MINIMUM DIMENSIONS SET FORTH IN THE DETAILS SHOWN BELOW. CONCRETE SHALL HAVE A MINIMUM 28 DAY COMPRESSIVE STRENGTH OF 2500 PSI. ALTERNATE DETAILS ARE ACCEPTABLE IF DESIGNED IN ACCORDANCE WITH THE GOVERNING CODE AND APPROVED BY THE BUILDING OFFICIAL. DETAILS SHOWN MAY NOT BE INCLUSIVE. FOUNDATION AND STEM WALL DESIGN (e.g. OVERTURNING AND REINFORCEMENT) BY OTHERS

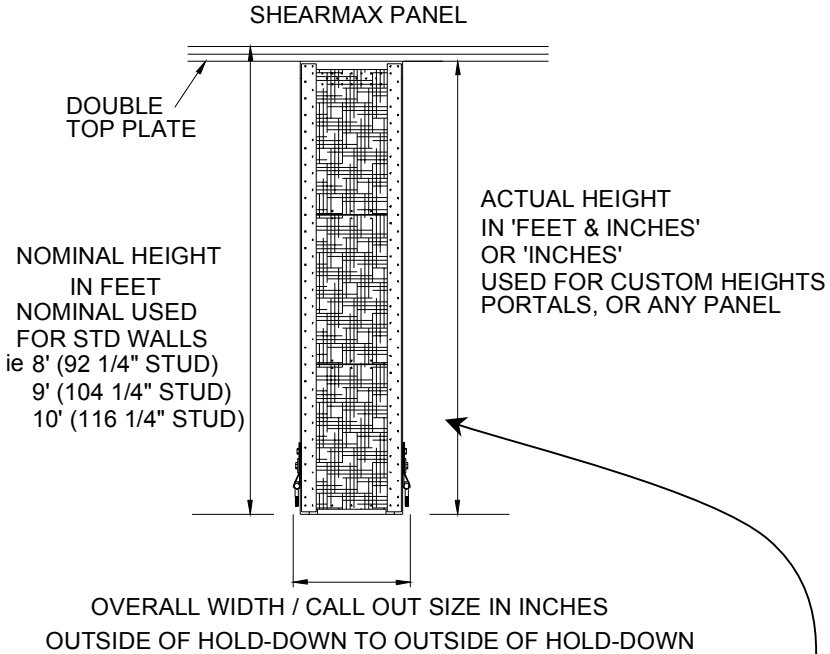


PLAN VIEW - OPTIONS FOR REQUIRED CONCRETE END DISTANCE @ CIP HOLD-DOWN ANCHOR



NOTES: 1. FOUNDATION AND STEM WALL DESIGN (i.e. REINFORCEMENT) BY OTHERS  
2. ALTERNATE ANCHORAGE CONFIGURATIONS MAY BE DESIGNED BY OTHERS

# SHEARMAX PANEL



## PANEL ID LABEL

**FIGURE 1: PANEL MODEL DESIGNATIONS: (for all panels)**

*SM XX - YY — CUSTOM HT — TF — EC  
(CUSTOM OPTION CODES)*

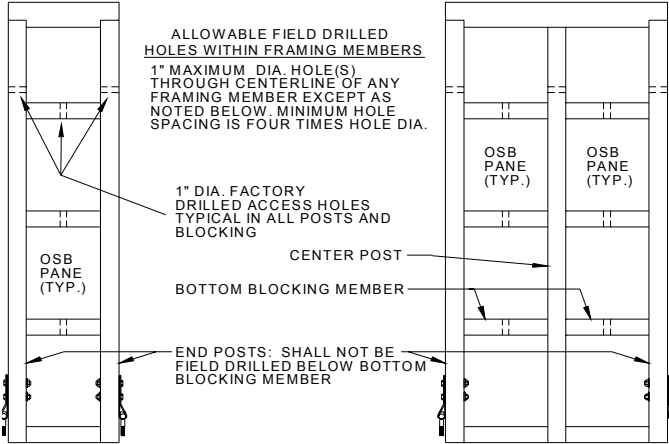
<i>X</i>	NOMINAL OVERALL WIDTH (in.)—Outside-to-Outside of hold-downs HEIGHT (Feet or Inches)—Nominal Panel Height - when specified in 'Feet' Actual Panel Height - when specified in 'Inches'
<i>CUSTOM HT</i>	<i>CUSTOM HEIGHT</i> —Panel Heights not listed in Table 2. Net Panel Height may be specified.
<i>TF</i> <i>EC6 or EC8</i>	<i>TRIM-FIT (TF) PANEL</i> —Short point height required. 3:12 Maximum Slope <i>ENHANCED CROSS-SECTION (EC) PANEL</i> — <i>EC6</i> (5-in net thickness), <i>EC8</i> (6 1/2-in net thickness)

**EXAMPLE – SM24-10- 117 3/4" Stock**  
**SHEARMAX 24" WIDE – 10' NOMINAL WALL HEIGHT**

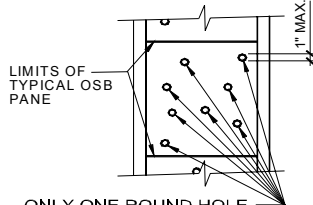
**EXAMPLE – SM24 – 10 (115 3/4") – TF – EC6**  
**SHEARMAX 24" WIDE – CUSTOM OPTIONS: NET HEIGHT 115 3/4" – TRIM FIT (115 3/4" SHORT POINT) – EC6 OPTION**

# ALLOWABLE SHEARMAX PANEL HOLES

## ALLOWABLE FRAMING MEMBER HOLES



## ALLOWABLE OSB HOLES



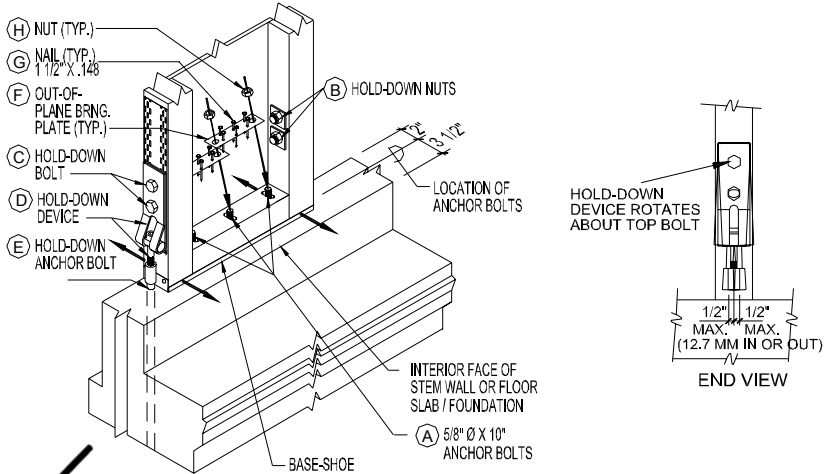
ONLY ONE ROUND HOLE IN ANY LOCATION EXCEPT AS NOTED BELOW

FOR ALL SHEARMAX PANELS  
 FOR ALL PANEL WIDTHS:  
 ANY OR ALL OSB PANES MAY HAVE ONE ROUND HOLE IN ANY LOCATION AS SHOWN. HOLE MUST NOT PENETRATE ANY FRAMING MEMBER.

# BOTTOM OF PANEL INSTALLATION

## BASIC INSTALLATION

1. PLACE PANEL OVER TOP OF ANCHOR BOLTS (A).
2. WHERE PANEL REALIGNMENT IS REQUIRED, LOOSEN NUTS (B) ON HOLD-DOWN BOLTS (C)
3. MOVE PANEL IN OR OUT WITHIN THE LIMITS OF THE SLOTTED ANCHOR BOLT HOLES TO ALIGN PANEL WITH WALL LINE.
4. ROTATE HOLD-DOWN DEVICE (D) TO ALIGN WITH HOLD-DOWN ANCHOR BOLT (E).
5. ATTACH HOLD-DOWN DEVICE (D) TO THE HOLD-DOWN ANCHOR BOLT (E).
6. RETIGHTEN NUTS (B) ON THE HOLD-DOWN BOLTS (C)
7. PLACE OUT-OF-PLANE BEARING PLATES (F) OVER TOP OF ANCHOR BOLTS (A) AND NAIL (G) IN PLACE
8. THREAD NUTS (H) ONTO ANCHOR BOLTS (A).

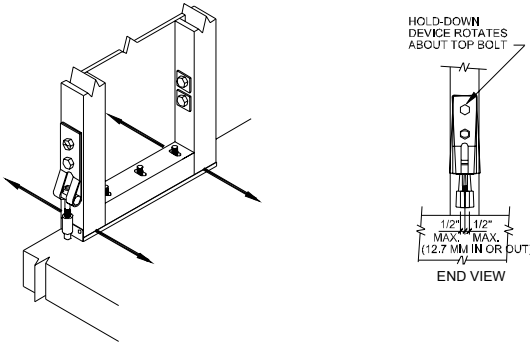


**OPTIONAL 1/2" BALL HEAD ALLEN WRENCH (AVAILABLE FROM SHEARMAX) ALLOWS RATCHET USE FOR QUICK ATTACHMENT.**

# BOTTOM OF PANEL ADJUSTMENTS

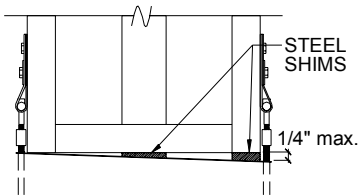
## BOLTS NOT CAST IN PLANE OF WALL

PROCEDURE: Loosen the 3/4" nuts & bolts that are used to attach the Hold-down Device to the post, and attach to the hold-down anchor bolt. Push the panel in and out within the slotted anchor bolt holes (while rotating the hold-down) to properly align. Retighten the 3/4" nuts & bolts and proceed with normal installation methods.



## BASE PLATE NOT LEVEL (WALL NOT PLUMB)

PLACE STEEL SHIMS UP TO 1/4" THICK UNDER POST THAT NEEDS TO BE SHIMMED



SIDE VIEW OF UNLEVEL BASE  
(EXAGGERATED FOR VIEWING)

# TOP OF PANEL INSTALLATION

## BASIC INSTALLATION

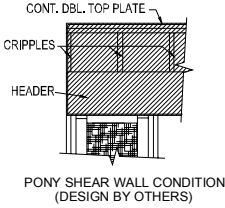
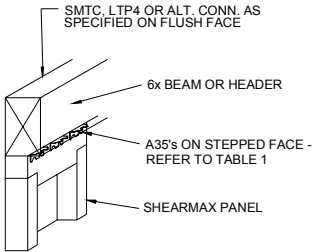
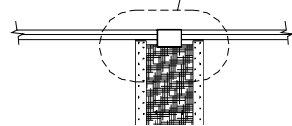
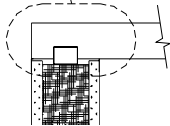
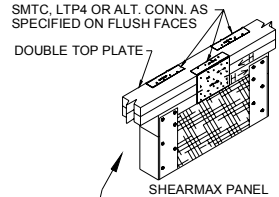
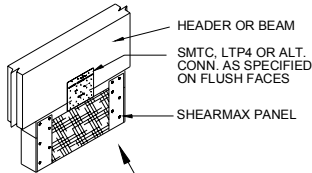
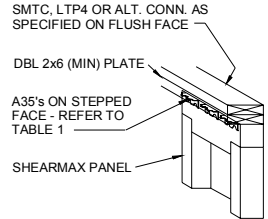
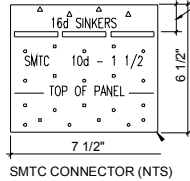


TABLE 1 - TOP-OF-PANEL CONNECTORS			
PANEL WIDTH	SMTC PER PANEL	A35/LTP4 PER PANEL	NOTES:
16"	2	4	1. APPLY EVENLY ACROSS PANEL (ONE SMTC OR TWO A35's PER SIDE MINIMUM)
18"	2	5	
21"	2	6	
24"	3	6	
28"	3	7	2. MIXING OF SMTC, A35 & LTP4 IS ALLOWED
32"	3	8	
36"	4	9	3. ONE SMTC EQUALS TWO A35 OR LTP4 BUT TWO A35 OR LTP4 DO NOT EQUAL ONE SMTC
42"	4	10	
48"	5	12	4. NAIL SMTC's WITH 10d COMMON [(0.148) x 1 1/2"] OR 16d GV



WHEN A SHIM IS INSTALLED, FILL ALL TRIANGULAR HOLES WITH 16d SINKER NAILS - REFER TO DETAIL 6  
PIECE MAY BE FOLDED 90° OUT-OF-PLANE TO FACILITATE INSTALLING SMTC CONNECTOR



## PORTAL CONDITION

## TOP PLATE CONDITION

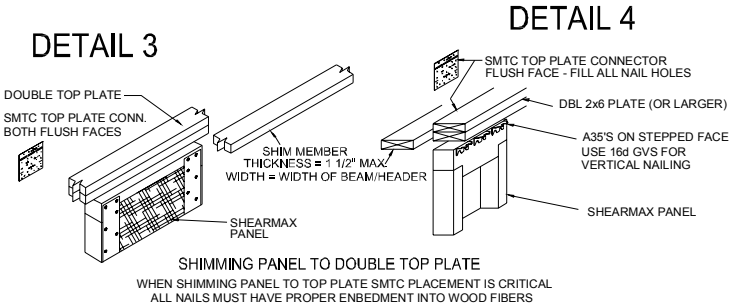
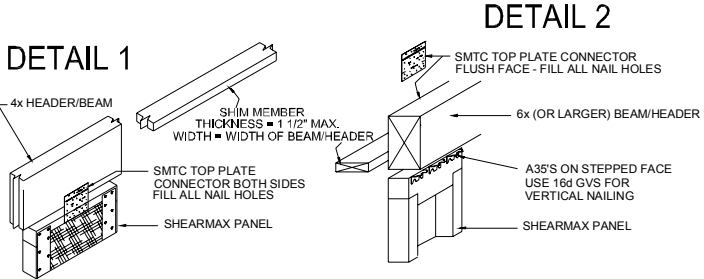
**TYPICAL 6" NOMINAL OR LARGER WALL SHOWN**  
**REAR OF PANEL SHOWN – FOR FRONT ATTACHMENT SEE TOP ILLUSTRATION**

- 1) ATTACH TOP OF THE SHEARMAX PANEL TO THE SPECIFIED LATERAL LOAD COLLECTOR (I.E. DOUBLE TOP PLATE OR PORTAL BEAM)
- 2) ATTACH WITH EITHER SHEARMAX SUPPLIED TOP CONNECTORS (SMTC) WITH 10D COMMON (0.148) X 1 1/2" (OR 16D GVS), OR USE OPTIONAL A35'S (MIXING OF SMTC & A35'S ALLOWED. ONE SMTC WILL REPLACE TWO A35 BUT TWO A35 WILL NOT EQUAL ONE SMTC)
- 3) ATTACH USING THE APPROPRIATE DIAGRAM ABOVE.

# TOP OF PANEL ADJUSTMENTS

## ALL PANELS MAY BE TRIMMED AT TOP 1/4" MAX

### SHIMMING OF PANELS



#### FIELD ADJUSTMENT:

PANEL IS TOO SHORT TO REACH SHEAR COLLECTOR (I.E. DBL TOP PLATE OR BEAM/HEADER)

**PROCEDURE:** INSERT FILLER (1 1/2" MAX. THICKNESS) BETWEEN PANEL AND SHEAR COLLECTOR. FILLER WIDTH IS TO MATCH SHEAR COLLECTOR WIDTH. MATERIAL TYPE IS TO BE EQUAL. ATTACH USING THE APPROPRIATE DIAGRAM ABOVE AND INSTRUCTIONS BELOW. NOTE SEE TOP OF PANEL INSTALLATION PAGE FOR CONNECTOR QUANTITY & LOCATION.

**PORTAL CONDITION 4" NOMINAL WALL:** (DETAIL 1) ATTACH SHEARMAX WITH SMTC'S ONLY USING 10D COMMON (0.148) X 1 1/2" (OR 16D GVS) EXCEPT DIAMOND SHAPED HOLES WHERE 16D GVS MUST BE USED, FILL ALL HOLES WITH NAILS.

**PORTAL CONDITION 6" NOMINAL AND WIDER WALL:** (DETAIL 2) ATTACH FLUSH SIDE OF SHEARMAX WITH SMTC'S ONLY USING 10D COMMON (0.148) X 1 1/2" (OR 16D GVS) EXCEPT DIAMOND SHAPED HOLES WHERE 16D GVS MUST BE USED. FILL ALL HOLES WITH NAILS. ATTACH OVERHANG SIDE WITH A35'S USING 16D GVS FOR ALL NAILING.

**DBL TOP PLATE CONDITION:** FOR 4" NOMINAL WALL (DETAIL 3) ONLY USE SMTC'S AND FOR 6" NOMINAL AND WIDER (DETAIL 4) CONDITIONS USE SMTC ON FLUSH SIDE & A35'S ON OVERHANG SIDE.

#### FOR ALL DBL TOP PLATE CONDITIONS:

THE SMTC LOCATION IS CRITICAL FOR THE CORRECT NUMBER OF NAILS AND PROPER EMBEDMENT INTO HEAD AND SHEAR COLLECTOR. THE SMTC MAY NEED TO BE ROTATED 90° FOR SOME SHIM CONDITIONS.

CALL SHEAR TRANSFER SYSTEMS FOR ASSISTANCE. 877-743-2762

# ENHANCED POST OPTIONS - GENERAL

POST ENHANCEMENTS ARE TO INCREASE THE POST SIZE. THIS IS USUALLY DONE WITH TALL PANELS (OVER 10') TO HELP WITH WIND AND VERTICAL LOADS WHEN NO OTHER TYPE OF BRACING IS ADDED.

**NOTE: THIS IS AN ISSUE THAT MUST BE ADDRESSED BY AND SPECIFIED BY THE ACTING ENGINEER OF RECORD, AND/OR AUTHORIZED REGULATORY AGENCIES. IF IN QUESTION ABOUT NEED FOR POST-ENHANCEMENT CONTACT THE ACTING ENGINEER OF RECORD.**

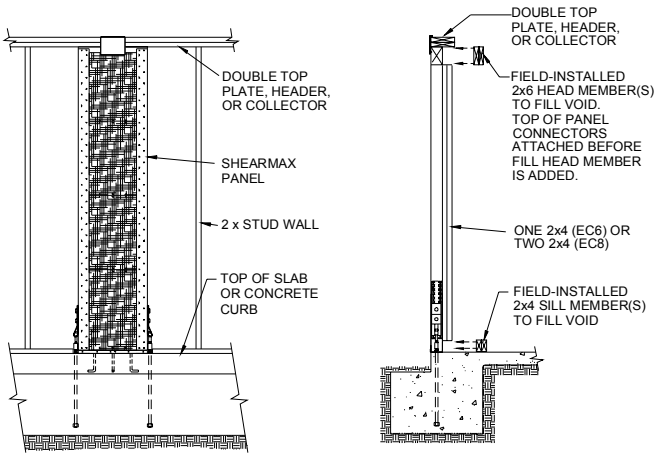
THERE ARE 2 TYPES OF POST ENHANCED OPTIONS:

- 1) SHEARMAX FACTORY ENHANCED (USUALLY PANELS OVER 14' IN HEIGHT) SEE BELOW
- 2) FIELD ENHANCED (USUALLY FOR PANELS BETWEEN 10' AND 14'). SEE OPPOSITE PAGE.

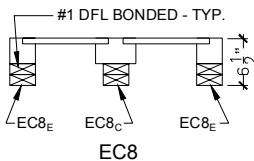
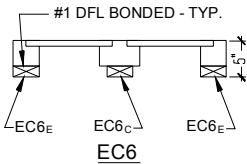
## FACTORY ENHANCED PANELS – EC6 OR EC8

THERE ARE 2 TYPES OF FACTORY ENHANCEMENTS THIS CONSISTS OF A GLUING PROCESS THAT IS DONE AT THE SHEARMAX MANUFACTURING PLANT. ADDITIONAL FIELD INSTALLED LUMBER MUST BE ADDED TO TOP AND BOTTOM OF PANEL AS DESCRIBED IN DRAWINGS BELOW.

- 1) A STANDARD PANEL WITH 1PIECE OF 2X4 LAMINATE (GLUED) TO BACK OF PANEL DESCRIBED AS EC6 OPTION (USUALLY FOR PANELS BETWEEN 14' AND 17')
- 2) A STANDARD PANEL WITH 2 PIECES OF 2X4 LAMINATE (GLUED) TO BACK OF PANEL DESCRIBED AS EC8 OPTION (USUALLY FOR PANELS BETWEEN 17' AND 20')



PANEL FRONT

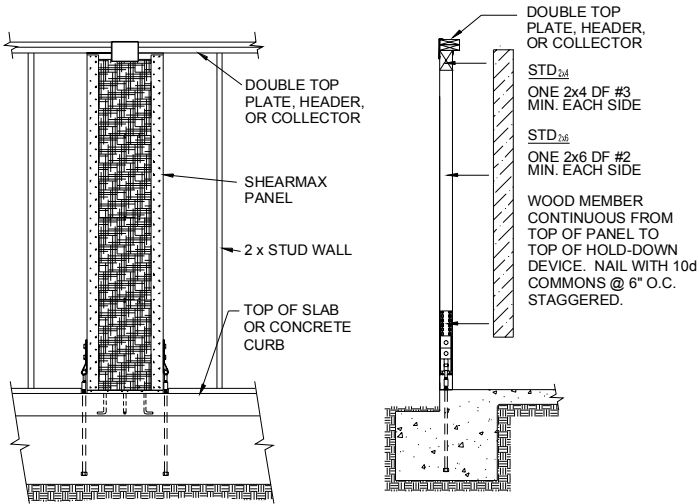


# ENHANCED POST OPTIONS

## FIELD ENHANCED (NAIL-ON) PANELS: STD 2X4 OR STD 2X6

FIELD ENHANCED – THERE ARE 2 TYPES OF FIELD ENHANCEMENTS. THIS CONSISTS OF ADDING LUMBER (A 2X4 OR 2X6) TO EACH SIDE OF THE PANEL. FROM THE TOP OF PANEL TO THE TOP OF THE HOLD-DOWN DEVICE.

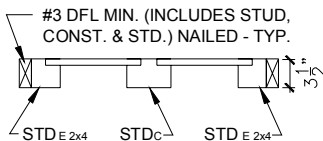
- 1) A STANDARD PANEL WITH A 2 X 4 ADD-ON DESCRIBED AS STD<sub>2x4</sub> (USUALLY FOR PANELS BETWEEN 10' AND 11')
- 2) A STANDARD PANEL WITH A 2 X 6 ADD-ON DESCRIBED AS STD<sub>2x6</sub> (USUALLY FOR PANELS BETWEEN 11' AND 14')



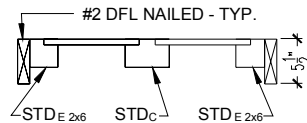
PANEL FRONT

FIELD-MODIFIED  
END POSTS (STD<sub>2x4</sub> OR STD<sub>2x6</sub>)

## PANEL CONFIGURATIONS / POST SECTIONS



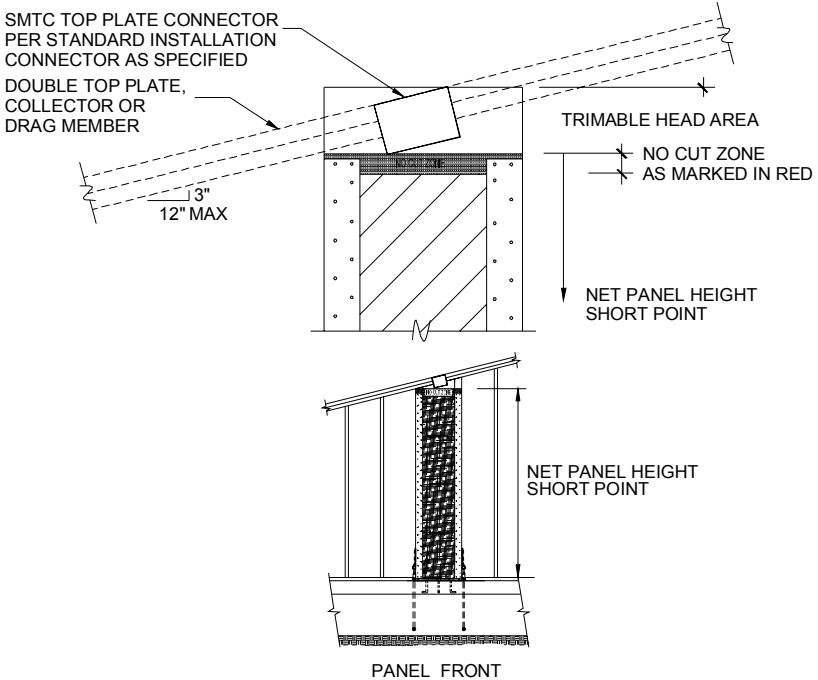
STD 2X4  
NAIL-ON



STD 2X6  
NAIL-ON

# TRIM-FIT PANEL

TRIM-FIT PANEL  
 TRIMABLE HEAD AREA - 3/12 PITCH MAX. TRIM TO  
 MATE WITH BOT. OF DBL. TOP PLATE OR COLLECTOR



TRIM-FIT PANELS ARE MADE WITH A TALLER HEAD FOR TRIMMING. THE TRIM FIT HEADS MAY VARY IN HEIGHT DEPENDING ON PANEL WIDTH, BUT THE HEAD WILL ALWAYS BE TALLER THAN 6". THE MAXIMUM SLOPE THAT THE HEAD MAY BE TRIMMED IS 3/12 (14°). THE TRIM-FIT HEAD IS MARKED WITH A RED STRIP TO SHOW THE 'NO CUT ZONE'. YOU MAY NOT CUT INTO OR BELOW THE 'NO CUT ZONE'. TRIM-FIT PANELS ARE USUALLY INSTALLED AFTER THE TOP MEMBER IS IN PLACE. (TOP PLATE, DRAG TRUSS, RAFTER, BEAM)

NOTE: IF THE PANEL IS NOT MARKED WITH A RED STRIP TO SHOW THE 'NO CUT ZONE' YOU DO NOT HAVE A TRIM TO FIT PANEL AND IT MAY NOT BE CUT)

- 1) PLACE THE SHEARMAX PANEL IN THE DESIRED LOCATION WITH THE BOTTOM OF PANEL PROPERLY LOCATED ON THE BASE-PLATE AND THE TOP ALONG SIDE THE TOP CONNECTOR.
- 2) WHILE HOLDING THE PANEL IN PLACE MARK WHERE TO CUT THE SHEARMAX HEAD TO OBTAIN A SNUG FIT UNDER THE CONNECTOR.
- 3) LOWER AND SECURE THE SHEARMAX PANEL AND CUT THE HEAD ALONG THE MARK.
- 4) INSTALL THE PANEL ACCORDING TO THE STANDARD INSTALLATION.

## OPTIONAL JAMB CLIP

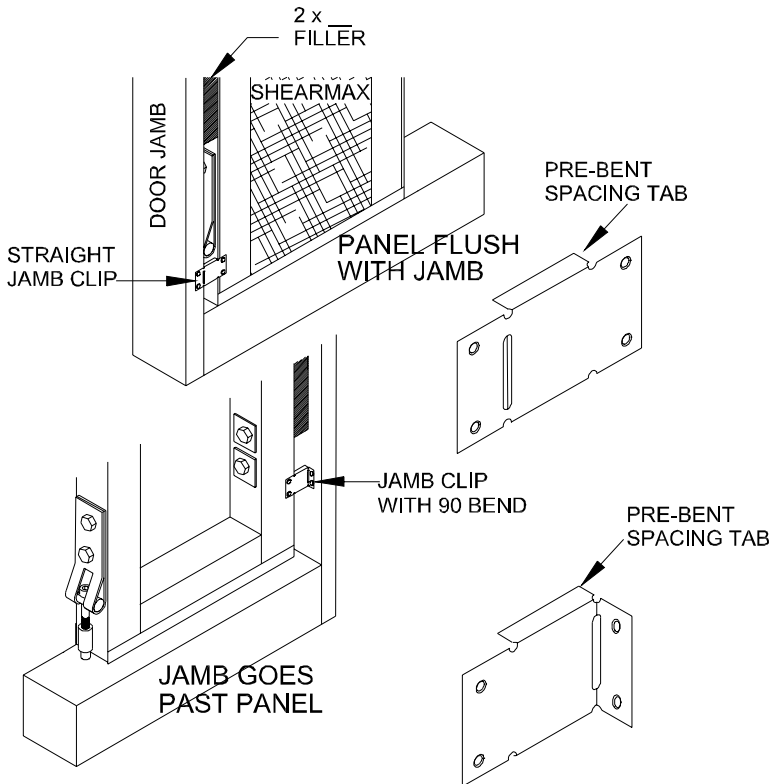
WHEN A GARAGE DOOR JAMB IS PLACED ALONG SIDE OF THE PANEL THE JAMB CLIP MAY BE USED TO HELP STABILIZE A GARAGE DOOR JAMB BELOW THE PANELS HOLD DOWN DEVICE. THE PRE-BENT TAB IS 1 ½" WIDE TO MATCH THE THICKNESS OF THE 2x \_\_ FILLER AND PROVIDE PROPER SPACING.

### FLUSH SIDE –

- 1) ON THE FLUSH SIDE JUST PLACE THE JAMB CLIP IN YOUR DESIRED AREA.
- 2) PUSH THE JAMB TIGHT AGAINST THE SPACING TAB SQUEEZING IT BETWEEN THE JAMB AND PANEL TO INSURE PROPER SPACING.
- 3) NAIL IN PLACE TO SECURE.

### JAMB OVERLAP SIDE –

- 1) BEND THE JAMB CLIP AT 90° ALONG THE PUNCHED SLOT AND PLACE THE SHORT SIDE AGAINST THE JAMB AND THE LONG SIDE AGAINST THE PANEL.
- 2) PUSH THE JAMB TIGHT AGAINST THE SPACING TAB SQUEEZING IT BETWEEN THE JAMB AND PANEL TO INSURE PROPER SPACING.
- 3) NAIL IN PLACE TO SECURE.



**SHEARMAX Exposure**

Keep all SHEARMAX components protected from harmful elements such as sun, water, rain, snow and/or harmful chemicals. Keep all SHEARMAX products dry. Properly support and store panels to prevent warping

**California Proposition 65 Compliance**

WARNING: This product may contain chemicals known to the State of California to cause cancer, birth defects, or other reproductive harm and health issues.



**Limited Warranty**

Shear Transfer Systems, Inc. warrants SHEARMAX Panels and SHEARMAX Panels attachment hardware to be free from defects in material or manufacturing. Shear Transfer Systems, Inc. further warrants SHEARMAX Panels and SHEARMAX Panels attachment hardware for adequacy of design when properly specified and installed and used in accordance with published design limits. This warranty does not apply to uses not in compliance with specific applications and installation procedures set forth in published SHEARMAX Panels sales, specification and or installation material or to modified products, or to products deteriorated due to environmental conditions.

Due to the unpredictable interactions resulting from potential shear load events such as earthquakes and wind loading, the specific design and location of the structure, the building materials used, the quality of construction, and the condition of the soils involved, damage may nonetheless result to a structure and its contents even if the loads resulting from a shear load event or events do not exceed SHEARMAX Panels sales, specification and or installation specifications, and SHEARMAX Panels and associated hardware are properly specified and installed in accordance with all applicable building codes.

All warranty obligations of Shear Transfer Systems, Inc. shall be limited, at the discretion of Shear Transfer Systems, Inc., to repair or replacement of a defective part. These remedies shall constitute Shear Transfer Systems, Inc.'s sole obligation and sole remedy under this warranty. In no event will Shear Transfer Systems, Inc. be responsible for incidental, consequential, or special loss or damage, however caused.

This Warranty is expressly in lieu of all other warranties, expressed or implied, including warranties of merchantability, or fitness for a particular purpose, all such other warranties being hereby expressly excluded. This warranty is subject to change without notice, consult [www.shearmax.com](http://www.shearmax.com) for current information.